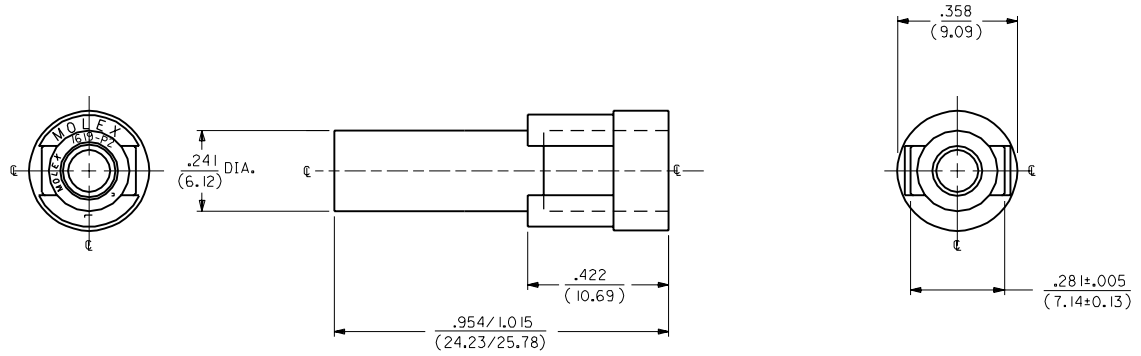


ORDER NO.	ENG. NO.	OLD ENG. NO.
03-09-2011	1619-IP1A5M1A	1619-P
03-09-7011	1619-IP1A5M1B	1619-P-D
03-09-7012	1619-IP1A5M1G	-----
03-09-7013	1619-IP1A5M1H	-----



ENGINEERING NUMBER SYSTEM

1619-IP1A5M1*

NOTES:

1. THIS HOUSING IS FOR USE WITH THE .093/(2.36) DIA. TERMINALS.
2. PRODUCT SPEC. 02-09 APPLIES.
3. MATERIAL: NYLON 66, 94V-2

- COLOR
- A) NATURAL F) GRAY
 - B) BLACK G) RED
 - C) AMBER H) BLUE
 - D) BROWN J) GREEN
 - E) ORANGE K) YELLOW

3	W2		
2	W2	W2	REDRAWN ON CAD ECN: U81151
1	W2		WANG 37-11-12
MM#	SH.	REV.	LTR.
			REVISIONS

DIMENSIONS SHOWN METRIC (INCH) UNLESS OTHERWISE SPECIFIED TOLERANCES: ANGULAR $\pm 1/2^\circ$

INCH	METRIC
3 PLACE $\pm .010$	---
2 PLACE $\pm .014$	± 0.25
1 PLACE ---	± 0.35

DRAFT WHERE APPLICABLE MUST REMAIN WITHIN DIMENSIONS

MOLEX INCORPORATED
LITSEJLL 60532 U.S.A.

TITLE: HOUSING, PLUG
.093/(2.36) DIAMETER

SHEET NO. 1 OF 1 DATE 11/12/97

PART NO. SD-1619-IP* DRWG. NO. SD-1619-IP*

DRWG. BY: WANG CHKD. BY: RW FILE NAME: SP1619X1.DWG

APP'D. BY: RE SCALE: 4 : 1 THIS DRAWING CONTAINS INFORMATION THAT IS PROPRIETARY TO MOLEX INC. AND SHOULD NOT BE USED WITHOUT WRITTEN PERMISSION.

SIZE: CP C